

# Antietam School District

## MT. PENN PRIMARY & ELEMENTARY SCH. FEBRUARY 2012 BREAKFAST MENU

**Milk comes with breakfast**

**MENU SUBJECT TO CHANGE**

Monday	Tuesday	Wednesday	Thursday	Friday
		1 MPPC - RF Cheddar Cheese Stix Saltine Crackers MPEC - Turkey Sausage Patty Multigrain Bun Sun Cup Grape Juice	2 Mini Flavored Waffle Pancake Syrup Pineapple Tidbits	3 TeddyCub Graham Cracker 4 oz. Fruit Yogurt Applesauce Sun Cup Orange Juice
6 Chs. Filled Pretzel Sun Cup Grape Juice	7 Plain Bageler Bar Sun Cup Fruit Punch	8 GFish Graham Crackers Soy Nut Butter Sun Cup Apple Juice	9 MPPC - Cinn. Raisin Bagel RF Cream Cheese MPEC - Mini Flavored Pancakes Pancake Syrup Sun Cup Apple Juice	10 Mini Flavored Waffle Pancake Syrup Sun Cup Apple Juice
13 MPPC - 4 oz. Fruit Yogurt Oat/Honey Granola Bar MPEC - Egg, Turkey/Chs Wrap Sun Cup Orange Juice	14 W.W. Cinnamon Roll Sun Cup Grape Juice	15 Cocoa Puffs Cereal RF Cheddar Cheese Stix Sun Cup Orange Juice	16 Mini Flavored Waffle Pancake Syrup Sun Cup Apple Juice	17 In Service Day NO SCHOOL TODAY
20 HOLIDAY NO SCHOOL TODAY	21 MPPC - Scooby Doo Graham Stix Soy Nut Butter MPEC - Turkey/Chs Brkfst Melt Sun Cup Orange Juice	22 Mini Flavored Waffle Pancake Syrup Sun Cup Apple Juice	23 Breakfast Chick. Sand. Multigrain Bun Sun Cup Fruit Punch	24 Oatmeal Brkfst Cookies Sun Cup Fruit Punch
27 Canadian BLT Sand. Sun Cup Fruit Punch	28 Berry Berry Kix Cereal Oat/Honey Granola Bar Sun Cup Orange Juice	29 Strawberry Chex Mix Sun Cup Fruit Punch		

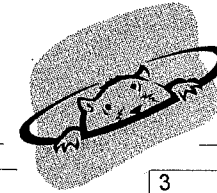
*'N/A' - denotes a nutrient that is either missing or incomplete for an individual ingredient.*



*'- denotes combined nutrient totals with either missing or incomplete nutrient data.*

**NOTICE:** The data contained within this report and the NUTRIKIDS® Menu Planning and Nutritional Analysis software should not be used for and does not provide menu planning for a child with a medical condition or food allergy. Ingredients and menu items are subject to change or substitution without notice. Please consult a medical professional for assistance in planning for or treating medical conditions.

MENU SUBJECT TO CHANGE

**Antietam School District**  
**MT. PENN PRIMARY & ELEMENTARY SCH.**  
**FEBRUARY 2012 LUNCH MENU**



Monday	Tuesday	Wednesday	Thursday	Friday
		1 DAY 3 WG Grilled Cheese Sand. Steamed Carrots Applesauce	2 DAY 4 Pulled Turkey BBQ Multigrain Bun Celery Sticks Sun Cup Fruit Punch	3 DAY 5 WG Cheese Ravioli Spaghetti Sauce Fresh Broccoli Florets Canned Pears
6 DAY 6 Pork BBQ Rib Fingers Multigrain Dinner Roll Mashed Potatoes Canned Peaches	7 DAY 1 RF Macaroni 'n Cheese Side Salad Canned Apple Slices	8 DAY 2 Pork Breakfast Links on a W W Hot Dog Bun Broccoli w/Chs Sauce Pineapple Tidbits	9 DAY 3 Turkey Tacos on Hard Taco Shell Shred. Cheddar Cheese Steamed Corn Canned Mixed Fruit	10 DAY 4 Bagged Lunch Day Ham and Cheese Multigrain Bun Petite Banana Sun Cup Apple Juice Mini Rice Krispy Treat
13 DAY 5 Turkey Chili w/Beans Shred. Cheddar Cheese Nacho Chips Sun Cup Fruit Punch Canned Pears	14 DAY 6 Alfredo Pasta with Meatballs Side Salad Fruit Cocktail 	15 DAY 1 Hot Dog on a W W Hot Dog Bun Baked Smiley Fries Applesauce	16 DAY 2 Turkey Sausage Patty On a WW English Muffin Hash Brown Potato Fresh Oranges	17 In Service Day NO SCHOOL TODAY
20 HOLIDAY NO SCHOOL TODAY 	21 DAY 3 Mini Chs. Pizza Bagels Celery Sticks Sun Cup Apple Juice	22 DAY 4 Breaded Fish Sticks Baked Curly Fries Canned Mixed Fruit	23 DAY 5 Ham/Cheese Chef Salad Multigrain Dinner Roll Canned Apple Slices	24 DAY 6 Early Dismissal Today Toasted Amer Chs Sticks Steamed Peas/Carrots Canned Mandarin Oranges
27 DAY 1 Cheeseburger Multigrain Bun Bread & Butter Pickles Lettuce & Tomato Slices Pineapple Tidbits	28 DAY 2 Brd. Chicken Sticks Steamed Mixed Veg Canned Pears	29 DAY 3 Taco Salad Cheesy Rice Fresh Apples Salsa	Assorted Types of Milk Served with All Meals	

**Sandwich of the Week:**

February 1 – 3: SoyNut Butter & Jelly  
 6 – 10: Deli Turkey & Cheese  
 13 – 16: Ham & Cheese  
 21 – 24: American Bologna & Cheese  
 27 – March 2<sup>nd</sup>: Sweet Bologna & Cheese