

# MPEC Principal's Bulletin

## Showing Appreciation

In preparing to write the newsletter this month, I looked at my calendar and noticed that Teacher Appreciation Week is just around the corner. I took some time to reflect on how lucky we are to have a teaching staff that is so dedicated, passionate and caring about educating the children of our community.

I want to take part of this newsletter to show my appreciation for all that our teachers do every day. I thought I would include a poem, as sometimes words of another say it best:

### **A Teacher for All Seasons** *By Joanna Fuchs*

A teacher is like Spring,  
Who nurtures new green sprouts,  
Encourages and leads them,  
Whenever they have doubts.

A teacher is like Summer,  
Whose sunny temperament  
Makes studying a pleasure,  
Preventing discontent.

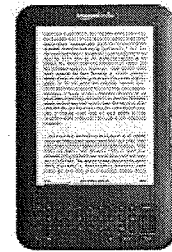
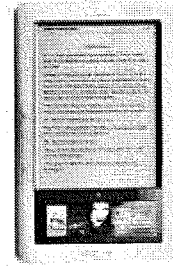
A teacher is like Fall,  
With methods crisp and clear,  
Lessons of bright colors  
And a happy atmosphere.

A teacher is like Winter,  
While it's snowing hard outside,  
Keeping students comfortable,  
As a warm and helpful guide.

Teacher, you do all these things,  
With a pleasant attitude;  
You're a teacher for all seasons,  
And you have my gratitude!

Thank you to all of the teachers at MPEC for what they do each and every day!

*~Mrs. Flannery, Principal*



## E-READERS

Electronic reading devices have become more popular and present in today's homes. Many students now own a Nook, Kindle or other electronic reading device and have been asking to bring them to school. Until recently, these electronic devices have not been permitted at school. We have re-examined our procedures and are now allowing students to bring them as a source from which to read.

Please be aware of the following:

- Devices are brought at your own risk. The school is not responsible if items are damaged or lost. Students are responsible for the security and maintenance of any electronic devices.
- Devices may be brought to school but should remain off and in student's backpacks when they are not being used.
- Internet capabilities must be turned off when students are at school.
- Gaming capabilities may not be used at school. The devices must be used for reading only.
- If a device is used inappropriately, a parent will be contacted to pick up the device from school and a warning will be issued. If inappropriate use continues, the device will be banned from school.

**Mt. Penn Elementary Center  
Antietam School District**

# MPEC Dates to Remember

## School Calendar

- FRIDAY, MAY 18 – NO SCHOOL- IN SERVICE DAY
- MONDAY, MAY 28 – NO SCHOOL- MEMORIAL DAY
- FRIDAY, JUNE 8 - LAST DAY OF SCHOOL- 11 AM DISMISSAL
- MONDAY, AUGUST 27- FIRST STUDENT DAY

## PTL Information

- TUESDAY, MAY 1 - 7:00 PM - PTL MEETING – MPEC CAFETERIA
- FRIDAY, JUNE 1- 6:00 PM- GRADE 5 and 6 DANCE- MPEC CAFETERIA
- TUESDAY, AUGUST 21- 7:00 PM - PTL MEETING – MPEC CAFETERIA

## Meeting Dates

- MONDAY, MAY 21 - 7:00 PM - SCHOOL BOARD WORKSHOP- DISTRICT OFFICE
- TUESDAY, MAY 29 - 7:00 PM - SCHOOL BOARD MEETING – DISTRICT OFFICE

## Other Dates to Note

- MPEC SPRING CONCERT- MAY 9- 6:30PM - MPPC AUDITORIUM
- MPEC ART SHOW- MAY 9 4:00-6:00PM; MAY 10 5:00-7:00PM
- WALKING SCHOOL BUS- MAY 31; 7:45 AM (weather permitting)
- COLOR DAY- JUNE 4 – (June 5,6 Rain Dates)
- GRADE 6 HONOR CEREMONY- JUNE 7- 7:00PM - MPPC AUDITORIUM

---

## WARM WEATHER DRESS CODE REMINDER



As warm weather months approach, remember to remind your children about proper dress.

\*Shorts and skirts must be longer than fingertip length.

\*Shirts must have straps that are at least 3 inches and midriff should not be exposed.

\*Hats and sunglasses are not to be worn during the school day

\*Flip Flops are not allowed in school.

Please see the Student Handbook for more information regarding the dress code.

### INTEGRATED PEST MANAGEMENT

*As we have informed you in the past, the Antietam School District participates in the Integrated Pest Management Program, which allows parents to be notified when a pest control treatment is applied to our fields, or in our buildings. Parents who wish to be informed when treatments are to be made must write a letter to this effect to: The Office of the Superintendent, 100 Antietam Road, Reading, PA 19606*

### BOROUGH OF MT. PENN – TOWNSHIP OF LOWER ALSACE CURFEW ORDINANCE #759

*It shall be unlawful for any minor to be or remain in or upon any public highway, park, or other public place within the Borough, Township or in any enclosure or vehicle which is on or in close proximity to any such public place within the Borough/Township between the hours of 10 PM and 5 AM on the following day official prevailing time, unless accompanied by the person charged with control after an event or activity which ended between the limiting hours; or, unless such minor is in lawful employment making it necessary to be in such place between the said hours; or, unless there exists a reasonable necessity therefore. The fact that a minor, unaccompanied as foresaid, is found in any of the foresaid places within the Borough/Township during the time period shall be prima facie evidence that said minor is there unlawfully and that no reasonable necessity or compelling reason exists therefore.*

### POLICY OF NONDISCRIMINATION

The Antietam School District is an equal opportunity education institution and will not discriminate on the basis of race, color, national origin, religion, age, sex, handicap, or Veteran status in its activities, programs, or employment practices as required by Title VI, Title IX, and Section 504. For information regarding civil rights, grievance procedures, services, activities, and facilities that are accessible to and usable by handicapped persons, contact Dr. Larry W. Mayes, Compliance Coordinator, Antietam School District, 100 Antietam Road, Reading, PA 19606, (610) 779-0554.

## REMINDERS

### GRANDPARENTS DAY



Don't forget that Grandparent's Day is being celebrated this week. In order to accommodate a large number of anticipated visitors, grandparents may only visit for one session on their scheduled day. We are not able to accommodate full/half day visits. Grandparents are welcomed to come to lunch which can be purchased in the cafeteria for \$5.

We will welcome grandparents for a visit on the following days:

#### **Grade 2- Thursday, May 3**

8:45-9:45 AM; 11:15-12:15 PM;  
LUNCH 10:45 AM; 1:00-2:00 PM

#### **Grade 3- Friday, May 4**

8:45-9:45 AM; 9:45-10:40 AM;  
LUNCH 11:00 AM; 12:20-1:20 PM

#### **Grade 4- Friday, May 4**

9:00-10:00 AM; 10:45-11:45 AM;  
LUNCH 11:55 AM; 1:00-2:00 PM

#### **Grade 5- Thursday, May 3**

8:30-9:30 AM; 10:40-11:40 AM;  
LUNCH 11:40 AM; 1:00-2:00 PM

#### **Grade 6- Thursday, May 3**

10:00-11:00 AM; 11:05-12:05 PM;  
LUNCH 12:25 PM; 1:30-2:30 PM

### GRADE 6 TRANSITION ACTIVITIES

The end of the school year is a big time for transition for all students, but especially our Grade 6 students. Many have enjoyed 5 years at MPEC and are anxious about moving up to AMSHS next school year.

The staff of the Middle/High School has already visited our Grade 6 students to start making them feel comfortable with their transition to Grade 7. This process continues during the month of May with a day our students attend AMSHS and a parent meeting.

Be on the lookout for information regarding these upcoming visits which will occur during the week of May 14, 2012. The parent meeting will be on Thursday, May 17 at 7PM at AMSHS Cafeteria.

### CELEBRATING FINE ARTS AT MPEC



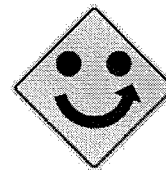
Mt. Penn Elementary Center celebrates the Fine Arts during the month of May with two exciting events.

**Spring Concert-** The chorus, band, and ensembles will be performing for us at their annual Spring Concert on Wednesday May 9 at 6:30 P.M. Join us for a night where our students show off their talents in a night of music.

**Art Show-** The community will have two chances to view our second annual Art Show. MPEC will be open for visitors on MAY 9 4:00-6:00PM; May 10 5:00-7:00PM. Come and see the talented works of our students in this Grade 2-6 Art Show.

### WALKING SCHOOL BUS

It is time for our last Walking School Bus event for the 2011 - 2012 school year! We will be walking Route #1 and Route #2 at the same time on Thursday, May 31 (weather permitting). We will be meeting at Redner's Warehouse Markets and Lutz's Funeral Home at 7:45 AM and walking to MPEC. Teachers will be posted at intersections on both routes to watch and wait with your children until the walking school bus "pulls up".



**SAFE ROUTES  
TO SCHOOL  
ACADEMY**

# Antietam School District

## 2012-2013 SCHOOL CALENDAR

August 2012						
Su	M	Tu	W	Th	F	Sa
			1	2	3	4
5	6	7	8	9	10	11
12	13	14	15	16	17	18
19	20	21	22	23	24	25
26	27	28	29	30	31	

September 2012						
Su	M	Tu	W	Th	F	Sa
						1
2	3	4	5	6	7	8
9	10	11	12	13	14	15
16	17	18	19	20	21	22
23	24	25	26	27	28	29
30						

October 2012						
Su	M	Tu	W	Th	F	Sa
	1	2	3	4	5	6
7	8	9	10	11	12	13
14	15	16	17	18	19	20
21	22	23	24	25	26	27
28	29	30	31			

November 2012						
Su	M	Tu	W	Th	F	Sa
				1	2	3
4	5	6	7	8	9	10
11	12	13	14	15	16	17
18	19	20	21	22	23	24
25	26	27	28	29	30	

December 2012						
Su	M	Tu	W	Th	F	Sa
						1
2	3	4	5	6	7	8
9	10	11	12	13	14	15
16	17	18	19	20	21	22
23	24	25	26	27	28	29
30	31					

January 2013						
Su	M	Tu	W	Th	F	Sa
		1	2	3	4	5
6	7	8	9	10	11	12
13	14	15	16	17	18	19
20	21	22	23	24	25	26
27	28	29	30	31		

February 2013						
Su	M	Tu	W	Th	F	Sa
					1	2
3	4	5	6	7	8	9
10	11	12	13	14	15	16
17	18	19	20	21	22	23
24	25	26	27	28		

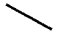



March 2013						
Su	M	Tu	W	Th	F	Sa
					1	2
3	4	5	6	7	8	9
10	11	12	13	14	15	16
17	18	19	20	21	22	23
24	25	26	27	28	29	30
31						

April 2013						
Su	M	Tu	W	Th	F	Sa
	1	2	3	4	5	6
7	8	9	10	11	12	13
14	15	16	17	18	19	20
21	22	23	24	25	26	27
28	29	30				

May 2013						
Su	M	Tu	W	Th	F	Sa
			1	2	3	4
5	6	7	8	9	10	11
12	13	14	15	16	17	18
19	20	21	22	23	24	25
26	27	28	29	30	31	

June 2013						
Su	M	Tu	W	Th	F	Sa
						1
2	3	4	5	6	7	8
9	10	11	12	13	14	15
16	17	18	19	20	21	22
23	24	25	26	27	28	29
30						

July 2013						
Su	M	Tu	W	Th	F	Sa
	1	2	3	4	5	6
7	8	9	10	11	12	13
14	15	16	17	18	19	20
21	22	23	24	25	26	27
28	29	30	31			

-  First/Last Student Day
-  Holiday/School Closed
-  In-Service Day
-  Early Dismissal Day

### August

Flex In-Service (1)  
15 & 16 New Staff Induction  
21-23 In-Service (2, 3, 4)

27-First Student Day  
31-Holiday

### September

03-Holiday  
28-12:30 p.m. Dismissal

### October

08-In-Service (5)  
31-12:30 p.m. Dismissal

### November

19-21 Em. Conferences  
21-12:30 p.m. Dismissal (HS)

### December

07-12:30 p.m. Dismissal  
21-12:30 p.m. Dismissal  
24-31-Holiday

### January

01 - Holiday  
14, 15 & 16-HS Mid-terms  
18-In-Service (6)  
21-Holiday

### February

15-Flex In-Service  
18-Holiday

### March

08-12:30 p.m. Dismissal  
22 - Em. Conferences  
25-29 - Spring Break  
25 & 26 - Snow Make-up days

### April

01 - Spring Break  
26 - In-Service (7)

### May

24-12:30 p.m. Dismissal  
27-Holiday

### June

4,5,6-HS  
07 - Last I  
11 a.m. I